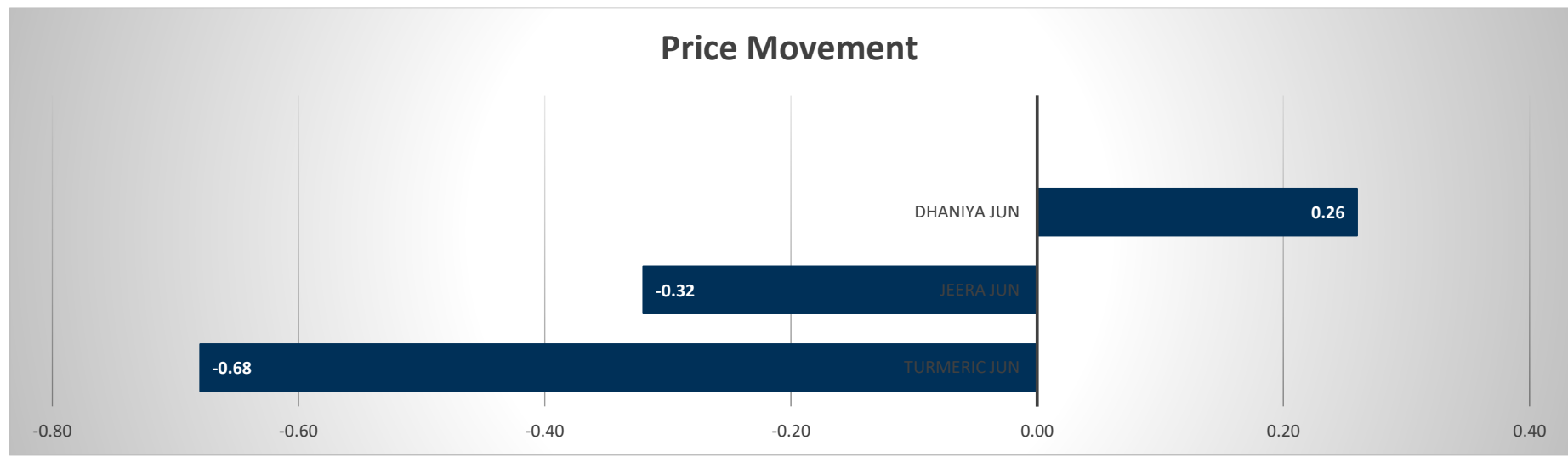


Commodity	Open	High	Low	Close	Rs.Chg	% Chg	Spot	Vol	OI	OI Chg	Fut-Spot	OI STATUS
Turmeric Jun	8288.00	8326.00	8104.00	8184.00	-56.00	-0.68	7725.00	2485	10500	-6.00	459.00	Long Liquidation
Jeera Jun	13970.00	14070.00	13920.00	13960.00	-45.00	-0.32	14100.00	612	6270	1.46	-140.00	Fresh Selling
Dhaniya Jun	7050.00	7088.00	6960.00	7064.00	18.00	0.26	7033.35	1285	7365	-0.61	30.65	Short Covering

Commodity	Daily Levels								Trend	Performance			
	Close	Res - 3	Res - 2	Res - 1	Pivot	Sup - 1	Sup - 2	Sup - 3		1 Week	1 Month	3 Month	1 Year
Turmeric	8184.00	8526.0	8426.0	8304.0	8204.0	8082.0	7982.0	7860.0	Negative	-21.48	-28.04	-14.01	16.96
Jeera	13960.00	14200.0	14135.0	14050.0	13985.0	13900.0	13835.0	13750.0	Negative	7.81	7.88	10.62	12.52
Dhaniya	7064.00	7242.0	7165.0	7114.0	7037.0	6986.0	6909.0	6858.0	Positive	2.52	2.04	6.67	19.84

Price Movement

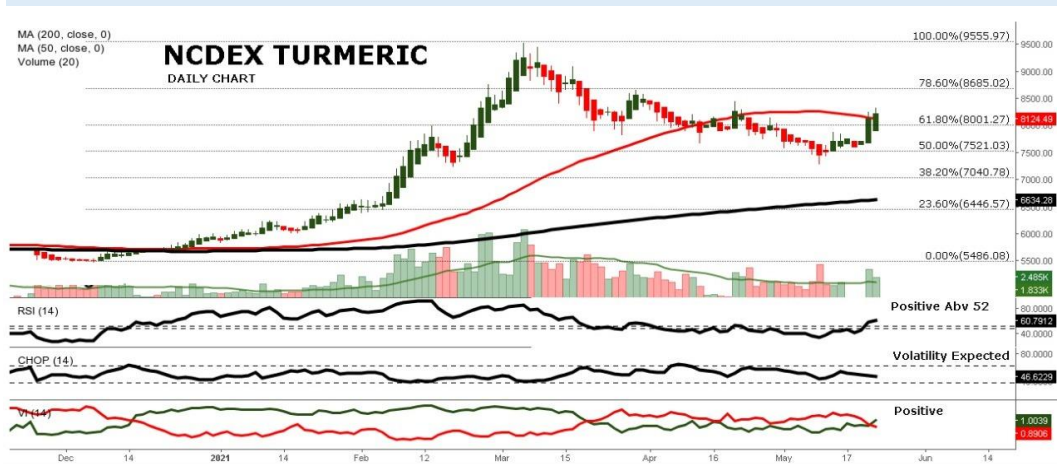


DAILY TURMERIC SYNOPSIS

Expiry	Open	High	Low	Close	Rs.Chg	% Chg	Spot	Vol	OI	OI Chg	Fut-Spot	OI STATUS
18 JUN 2021	8288.00	8326.00	8104.00	8184.00	-56.00	-0.68	7725.00	2485	10500	-6.00	459.00	Long Liquidation
20 JUL 2021	8300.00	8384.00	8250.00	8316.00	-88.00	-1.05	7725.00	790	825	132.39	591.00	Fresh Selling
20 AUG 2021	0.00	0.00	0.00	0.00	0.00	0.00	7725.00	0	0	0.00	-7725.00	Long Liquidation

- Turmeric trading range for the day is 7982-8426.
- Turmeric dropped on profit booking as pressure seen after prices dropped across various APMC yards in the country mainly on account of slack demand.
- Turmeric prices are down as there is no demand because of a fresh lockdown due to rise in Covid-19 cases could result in stockists' purchases dropping.
- Downside seen limited on concerns over production prospects in the new season, relatively lower carryover stocks, and better exports prospects.
- In Nizamabad, a major spot market in AP, the price ended at 7725 Rupees gained 19.45 Rupees.

CHART



TECHNICALS

Simple Moving Average

5 Days	10 Days	20 Days	50 Days	100 Days	200 Days
8067	7861	7846	8153	7513	6659
BUY	BUY	BUY	BUY	BUY	BUY

Exponential Moving Average

5 Days	10 Days	20 Days	50 Days	100 Days	200 Days
8082	7971	7937	7903	7544	6998
BUY	BUY	BUY	BUY	BUY	BUY

Spread

Month	Rate	JUN	JUL	AUG
JUN	8184		132	-8184
JUL	8316			-8316
AUG	0			

DAILY JEERA SYNOPSIS

Expiry	Open	High	Low	Close	Rs.Chg	% Chg	Spot	Vol	OI	OI Chg	Fut-Spot	OI STATUS
18 JUN 2021	13970.00	14070.00	13920.00	13960.00	-45.00	-0.32	14100.00	612	6270	1.46	-140.00	Fresh Selling
20 JUL 2021	14195.00	14195.00	14070.00	14110.00	-80.00	-0.56	14100.00	195	327	22.47	10.00	Fresh Selling
20 AUG 2021	0.00	0.00	0.00	0.00	0.00	0.00	14100.00	0	0	0.00	-14100.00	Long Liquidation

- Jeera trading range for the day is 13835-14135.
- Jeera dropped as lockdown restrictions increased against rising Covid cases, slowing spot trade interest weakened market sentiments.
- As India struggles against curbing the Corona pandemic, exports markets have turned subdued.
- The importers prefer to wait for the situation to normalize before negotiating for fresh deals.
- In Unjha, a key spot market in Gujarat, jeera edged up by 57.15 Rupees to end at 14100 Rupees per 100 kg.

CHART



TECHNICALS

Simple Moving Average

5 Days	10 Days	20 Days	50 Days	100 Days	200 Days
13952	13946	13937	14248	13739	13846
BUY	BUY	BUY	SELL	BUY	BUY

Exponential Moving Average

5 Days	10 Days	20 Days	50 Days	100 Days	200 Days
13970	13966	14002	14031	13943	13965
SELL	SELL	SELL	SELL	BUY	SELL

Spread

Month	Rate	JUN	JUL	AUG
JUN	13960		150	-13960
JUL	14110			-14110
AUG	0			

DAILY DHANIYA SYNOPSIS

Expiry	Open	High	Low	Close	Rs.Chg	% Chg	Spot	Vol	OI	OI Chg	Fut-Spot	OI STATUS
18 JUN 2021	7050.00	7088.00	6960.00	7064.00	18.00	0.26	7033.35	1285	7365	-0.61	30.65	Short Covering
20 JUL 2021	7070.00	7166.00	7070.00	7124.00	-54.00	-0.75	7033.35	250	215	48.28	90.65	Fresh Selling
20 AUG 2021	0.00	0.00	0.00	0.00	0.00	0.00	7033.35	0	0	0.00	-7033.35	Long Liquidation

- Dhaniya trading range for the day is 6909-7165.
- Dhaniya gained as sentiments are much better due to higher export demand and less stock in the pipeline
- However, upside seen limited as mandis across Rajasthan was affected due to the rapidly growing cases of corona virus.
- According to FISS the production of coriander from the country this year will increase by 2.3% compared to last year.
- In Kota spot market in Rajasthan the prices gained 111.75 Rupees to end at 7033.35 Rupees per 100 kg.

CHART



TECHNICALS

Simple Moving Average

5 Days	10 Days	20 Days	50 Days	100 Days	200 Days
7006	6902	6813	6999	6656	6601
BUY	BUY	BUY	BUY	BUY	BUY

Exponential Moving Average

5 Days	10 Days	20 Days	50 Days	100 Days	200 Days
7005	6940	6907	6883	6764	6617
BUY	BUY	BUY	BUY	BUY	BUY

Spread

Month	Rate	JUN	JUL	AUG
JUN	7064		60	-7064
JUL	7124			-7124
AUG	0			

TURMERIC PRICE MOVEMENT SINCE 2011

Year	Harvesting					Sowing		Growth					Crop Calendar
	JAN	FEB	MAR	APR	MAY	JUN	JUL	AUG	SEP	OCT	NOV	DEC	
2011	9908.00	9868.00	9496.00	8830.00	7434.00	7736.00	7276.00	5780.00	4480.00	5010.00	4494.00	4766.00	-5478.00
	-3.28	-0.40	-3.77	-7.01	-15.81	4.06	-5.95	-20.56	-22.49	11.83	-10.30	6.05	-53.48
2012	4626.00	4836.00	4142.00	3508.00	3732.00	4110.00	5746.00	6080.00	5654.00	5128.00	4896.00	6798.00	2032.00
	-2.94	4.54	-14.35	-15.31	6.39	10.13	39.81	5.81	-7.01	-9.30	-4.52	38.85	42.64
2013	6342.00	6174.00	6394.00	6414.00	5860.00	5848.00	5100.00	5232.00	4632.00	4580.00	5062.00	6616.00	-182.00
	-6.71	-2.65	3.56	0.31	-8.64	-0.20	-12.79	2.59	-11.47	-1.12	10.52	30.70	-2.68
2014	7346.00	6904.00	6302.00	6754.00	6254.00	6574.00	6418.00	6616.00	6014.00	6212.00	6404.00	8990.00	2374.00
	11.03	-6.02	-8.72	7.17	-7.40	5.12	-2.37	3.09	-9.10	3.29	3.09	40.38	35.88
2015	8102.00	8544.00	7662.00	8486.00	7854.00	7048.00	7196.00	8732.00	7764.00	8984.00	9762.00	9780.00	790.00
	-9.88	5.46	-10.32	10.75	-7.45	-10.26	2.10	21.35	-11.09	15.71	8.66	0.18	8.79
2016	8200.00	8688.00	8110.00	8368.00	7964.00	8292.00	8154.00	7300.00	7186.00	7332.00	7254.00	6874.00	-2906.00
	-16.16	5.95	-6.65	3.18	-4.83	4.12	-1.66	-10.47	-1.56	2.03	-1.06	-5.24	-29.71
2017	6758.00	6876.00	6278.00	6058.00	5322.00	6378.00	7532.00	7322.00	7318.00	7070.00	7780.00	7842.00	968.00
	-1.69	1.75	-8.70	-3.50	-12.15	19.84	18.09	-2.79	-0.05	-3.39	10.04	0.80	14.08
2018	7314.00	6628.00	6694.00	7214.00	7192.00	7290.00	7312.00	6868.00	6770.00	6796.00	6502.00	6740.00	-1102.00
	-6.73	-9.38	1.00	7.77	-0.30	1.36	0.30	-6.07	-1.43	0.38	-4.33	3.66	-14.05
2019	6398.00	6238.00	6656.00	6438.00	7455.00	6320.00	6800.00	6780.00	6144.00	6160.00	5700.00	6562.00	-178.00
	-5.07	-2.50	6.70	-3.28	15.80	-15.22	7.59	-0.29	-9.38	0.26	-7.47	15.12	-2.64
2020	5956.00	6000.00	5802.00	5436.00	5284.00	5752.00	5764.00	6148.00	5776.00	5828.00	5536.00	5924.00	-638.00
	-9.23	0.74	-3.30	-6.31	-2.80	8.86	0.21	6.66	-6.05	0.90	-5.01	7.01	-9.72
2021	6554.00	8302.00	8490.00	7804.00									1880.00
	10.63	26.67	2.26	-8.08									31.74
Average	-3.64	2.20	-3.84	-1.30	-3.72	2.78	4.53	-0.07	-7.96	2.06	-0.04	13.75	Average

JEERA PRICE MOVEMENT SINCE 2011

Year	Growth	Harvesting					Sowing					Growth	Crop Calendar
	JAN	FEB	MAR	APR	MAY	JUN	JUL	AUG	SEP	OCT	NOV	DEC	
2011	14706.00 2.65	17401.00 18.33	15710.00 -9.72	15197.00 -3.27	14094.00 -7.26	14627.00 3.78	16000.00 9.39	15636.00 -2.28	14676.00 -6.14	14379.00 -2.02	13452.00 -6.45	16024.00 19.12	1698.00 11.85
2012	14745.00 -7.98	14112.00 -4.29	11980.00 -15.11	12352.00 3.11	13015.00 5.37	13580.00 4.34	15350.00 13.03	14485.00 -5.64	13627.00 -5.92	14310.00 5.01	14208.00 -0.71	14672.00 3.27	-1352.00 -8.44
2013	13565.00 -7.54	12990.00 -4.24	13040.00 0.38	12887.00 -1.17	13182.00 2.29	13190.00 0.06	12980.00 -1.59	13672.50 5.34	12837.00 -6.11	12542.50 -2.29	12535.00 -0.06	12607.00 0.57	-2065.00 -14.07
2014	12130.00 -3.78	12520.00 3.22	10025.00 -19.93	10490.00 4.64	11135.00 6.15	11260.00 1.12	11180.00 -0.71	11290.00 0.98	10905.00 -3.41	11380.00 4.36	12315.00 8.22	15650.00 27.08	3043.00 24.14
2015	14720.00 -5.94	14790.00 0.48	14875.00 0.57	18045.00 21.31	17855.00 -1.05	16140.00 -9.61	15385.00 -4.68	16525.00 7.41	15895.00 -3.81	16200.00 1.92	16065.00 -0.83	14565.00 -9.34	-1085.00 -6.93
2016	13395.00 -8.03	13980.00 4.37	15565.00 11.34	17415.00 11.89	16345.00 -6.14	18040.00 10.37	19700.00 9.20	17755.00 -9.87	17295.00 -2.59	17410.00 0.66	18370.00 5.51	16855.00 -8.25	2290.00 15.72
2017	17900.00 6.20	16895.00 -5.61	17900.00 5.95	19490.00 8.88	17630.00 -9.54	18920.00 7.32	19340.00 2.22	19870.00 2.74	19280.00 -2.97	18560.00 -3.73	21780.00 17.35	21650.00 -0.60	4795.00 28.45
2018	16835.00 -22.24	15135.00 -10.10	15010.00 -0.83	15710.00 4.66	16195.00 3.09	18670.00 15.28	20390.00 9.21	19545.00 -4.14	18930.00 -3.15	20980.00 10.83	18640.00 -11.15	17685.00 -5.12	-3965.00 -18.31
2019	15965.00 -9.73	15440.00 -3.29	15735.00 1.91	16944.00 7.68	17540.00 3.52	17155.00 -2.19	17725.00 3.32	16920.00 -4.54	17165.00 1.45	16405.00 -4.43	16285.00 -0.73	16245.00 -0.25	-1440.00 -8.14
2020	14100.00 -13.20	13680.00 -2.98	14100.00 3.07	13645.00 -3.23	13560.00 -0.62	13645.00 0.63	14115.00 3.44	14240.00 0.89	13730.00 -3.58	14465.00 5.35	13805.00 -4.56	12665.00 -8.26	-3580.00 -22.04
2021	13435.00 6.08	13475.00 0.30	14710.00 9.17	13900.00 -5.51									1235.00 9.75
Average	-6.89	-0.59	-1.29	5.28	-1.02	3.47	5.09	-1.45	-3.26	1.03	1.60	1.66	Average

DHANIYA PRICE MOVEMENT SINCE 2011

Year	Harvesting				Sowing				Growth	Crop Calendar			
	JAN	FEB	MAR	APR	MAY	JUN	JUL	AUG	SEP		OCT	NOV	DEC
2011	4586.00 10.12	5122.00 11.69	4825.00 -5.80	5184.00 7.44	4546.00 -12.31	4182.00 -8.01	6130.00 46.58	5825.00 -4.98	5272.00 -9.49	5120.00 -2.88	3985.00 -22.17	4129.00 3.61	-457.00 -9.97
2012	3937.00 -4.65	4517.00 14.73	4214.00 -6.71	3880.00 -7.93	3705.00 -4.51	3631.00 -2.00	4710.00 29.72	4071.00 -13.57	3924.00 -3.61	4434.00 13.00	5018.00 13.17	5489.00 9.39	1360.00 32.94
2013	6864.00 25.05	6566.00 -4.34	6743.00 2.70	6877.00 1.99	6745.00 -1.92	6537.00 -3.08	5232.00 -19.96	5728.00 9.48	5792.00 1.12	6806.00 17.51	7566.00 11.17	8063.00 6.57	2574.00 46.89
2014	8278.00 2.67	9440.00 14.04	9530.00 0.95	9373.00 -1.65	9504.00 1.40	11098.00 16.77	11825.00 6.55	11922.00 0.82	12146.00 1.88	12029.00 -0.96	12856.00 6.88	11611.00 -9.68	3548.00 44.00
2015	7845.00 -32.43	6268.00 -20.10	8708.00 38.93	10775.00 23.74	13335.00 23.76	11964.00 -10.28	11433.00 -4.44	11034.00 -3.49	11366.00 3.01	9807.00 -13.72	10130.00 3.29	7724.00 -23.75	-3887.00 -33.48
2016	6351.00 -17.78	6445.00 1.48	7066.00 9.64	7167.00 1.43	6890.00 -3.86	7314.00 6.15	8384.00 14.63	8105.00 -3.33	7497.00 -7.50	7455.00 -0.56	8007.00 7.40	7925.00 -1.02	201.00 2.60
2017	7492.00 -5.46	6502.00 -13.21	7537.00 15.92	6567.00 -12.87	4730.00 -27.97	5033.00 6.41	4897.00 -2.70	4940.00 0.88	4454.00 -9.84	4886.00 9.70	5447.00 11.48	5494.00 0.86	-2431.00 -30.68
2018	6040.00 9.94	5601.00 -7.27	5068.00 -9.52	4760.00 -6.08	4384.00 -7.90	4750.00 8.35	5175.00 8.95	5055.00 -2.32	4992.00 -1.25	6067.00 21.53	6468.00 6.61	6353.00 -1.78	859.00 15.64
2019	6605.00 3.97	6160.00 -6.74	6656.00 8.05	7184.00 7.93	7006.00 -2.48	6970.00 -0.51	6529.00 -6.33	5974.00 -8.50	5590.00 -6.43	6835.00 22.27	6695.00 -2.05	6860.00 2.46	507.00 7.98
2020	6498.00 -5.28	5922.00 -8.86	5820.00 -1.72	5798.00 -0.38	5620.00 -3.07	6280.00 11.74	6350.00 1.11	6974.00 9.83	6792.00 -2.61	6742.00 -0.74	6370.00 -5.52	5862.00 -7.97	-998.00 -14.55
2021	6188.00 5.56	7176.00 15.97	7104.00 -1.00	6746.00 -5.04									884.00 15.08
Average	-0.75	-0.24	4.68	0.78	-3.89	2.55	7.41	-1.52	-3.47	6.52	3.03	-2.13	Average

KEDIA ADVISORY

KEDIA STOCKS & COMMODITIES RESEARCH PVT LTD.
Mumbai. INDIA.

For more details, please contact:

Mobile: +91 9323406035 / 9320096333 / 9619551022

Email: info@kediaadvisory.com

URL: www.kediaadvisory.com

SEBI REGISTRATION NUMBER - INH000006156

General Disclaimers: This Report is prepared and distributed by Kedia Stocks & Commodities Research Pvt Ltd. for information purposes only. The recommendations, if any, made herein are expression of views and/or opinions and should not be deemed or construed to be neither advice for the purpose of purchase or sale through KSCRPL nor any solicitation or offering of any investment /trading opportunity. These information / opinions / views are not meant to serve as a professional investment guide for the readers. No action is solicited based upon the information provided herein. Recipients of this Report should rely on information/data arising out of their own investigations. Readers are advised to seek independent professional advice and arrive at an informed trading/investment decision before executing any trades or making any investments. This Report has been prepared on the basis of publicly available information, internally developed data and other sources believed by KSCRPL to be reliable. KSCRPL or its directors, employees, affiliates or representatives do not assume any responsibility for, or warrant the accuracy, completeness, adequacy and reliability of such information / opinions / views. While due care has been taken to ensure that the disclosures and opinions given are fair and reasonable, none of the directors, employees, affiliates or representatives of KSCRPL shall be liable for any direct, indirect, special, incidental, consequential, punitive or exemplary damages, including lost profits arising in any way whatsoever from the information / opinions / views contained in this Report. The possession, circulation and/or distribution of this Report may be restricted or regulated in certain jurisdictions by appropriate laws. No action has been or will be taken by KSCRPL in any jurisdiction (other than India), where any action for such purpose(s) is required. Accordingly, this Report shall not be possessed, circulated and/ or distributed in any such country or jurisdiction unless such action is in compliance with all applicable laws and regulations of such country or jurisdiction. KSCRPL requires such recipient to inform himself about and to observe any restrictions at his own expense, without any liability to KSCRPL. Any dispute arising out of this Report shall be subject to the exclusive jurisdiction of the Courts in India.